

Приложение № 1

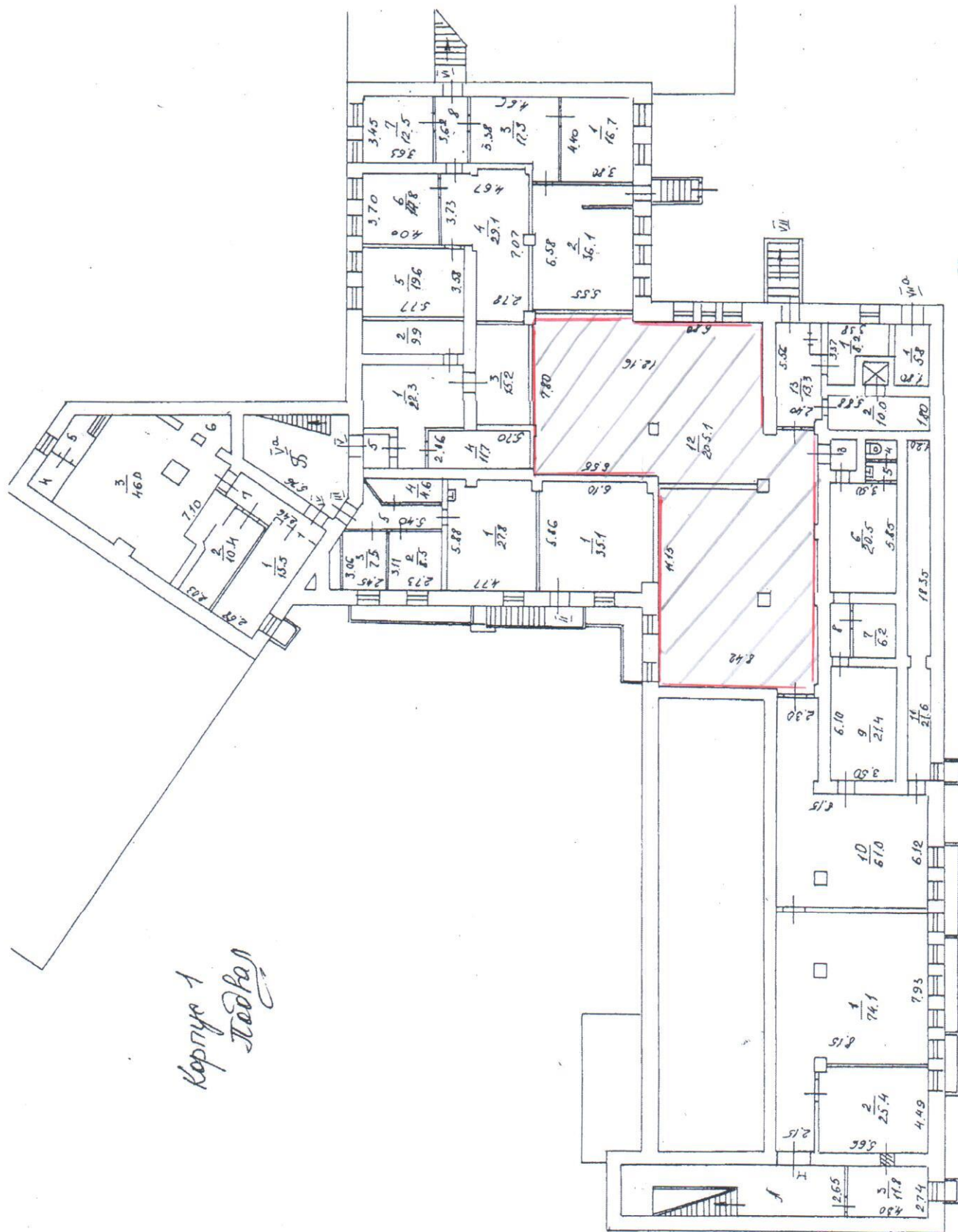
к Договору № _____
от « _____ » _____ 2014 г.

ПОЭТАЖНЫЕ ПЛАНЫ

51

Приложение № 1

КОРПУС 1



Корпус 1
Лодка

"100-100,000"
 TOP MODEL

1 ЭТАЖ

ДЕЙСТВИТЕЛЬНО
В ТЕЧЕНИЕ 1 ГОДА

Инженер-проектировщик
технической информации
"Ото-Гидротех" - 1100
г. Москва

С.А. Руденко на правах
автора проекта
Инженер-проектировщик
технической информации
"Ото-Гидротех" - 1100
г. Москва

Правовое управление
ОАО ИПО «СНИИТМАШ»

7-06-2012
W. N.

Правовое управление
ОАО НПО «ДИНИТМАШ»

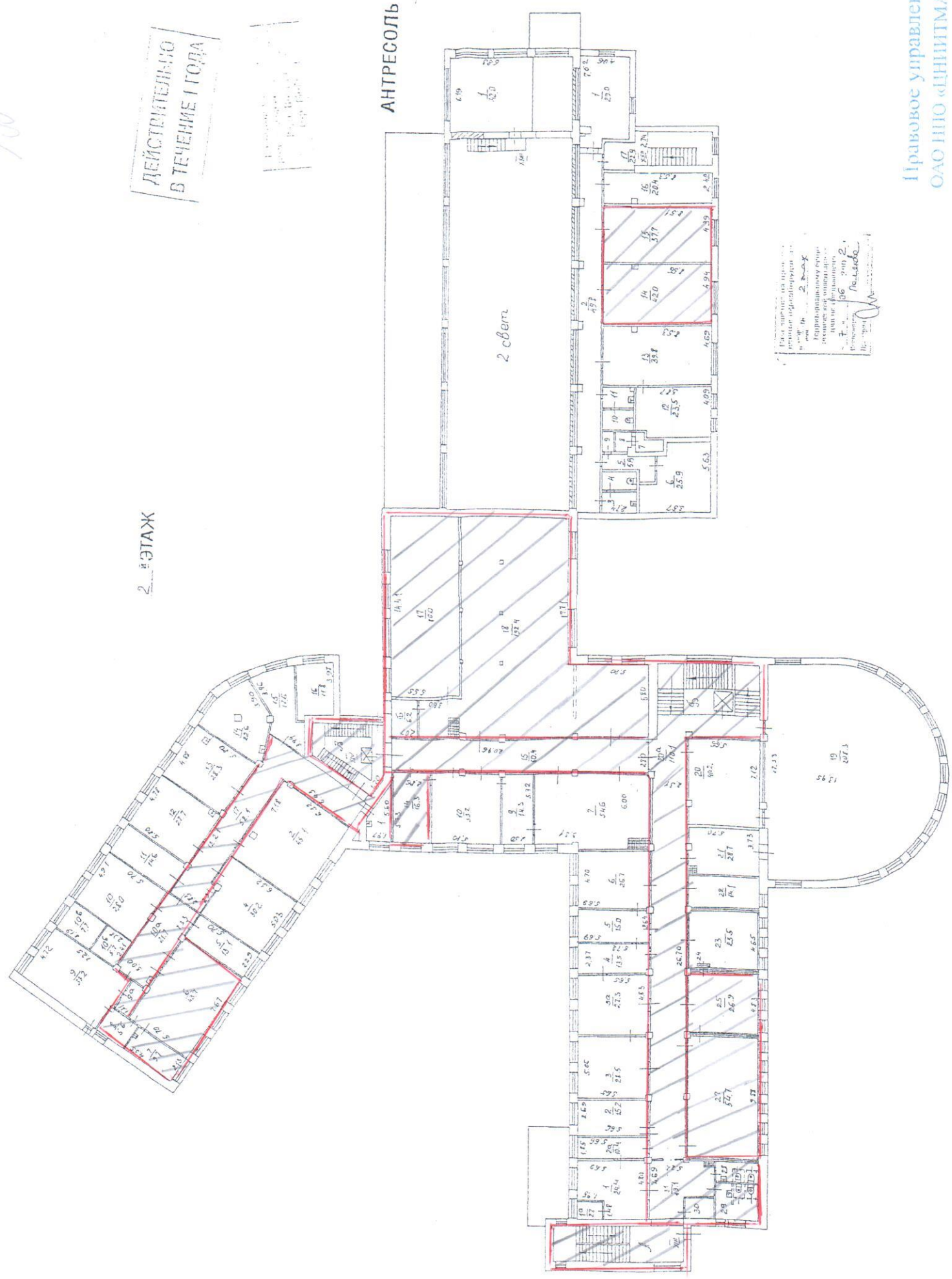
корпус 1

ДЕЙСТВИТЕЛЬНО
В ТЕЧЕНИЕ 1 ГОДА

2 ЭТАЖ

АНТРЕСОЛЬ

2 свет



Расширение на проект
в соответствии с
техническим заданием
на проектирование
зданий и сооружений
по проекту
Л.С.С.С.С.

Правовое управление
ОАО НПО «ЦНИТМАШ»

корпус

ДЕЙСТВИТЕЛЬНО
В ТЕЧЕНИЕ ПОДА

План № 01/02
от 20.01.2010 г.
1:500

3. ЭТАЖ

Правовое управление
ОАО НПО «ЦЕНТМАШ»
Лист 2
7-06-2010
Подпись





This is a hand-drawn architectural floor plan of a building, likely a school or institutional structure, given the presence of multiple stairwells and a complex room layout. The plan is oriented with a red line tracing a path through the upper and right portions of the building. The layout includes numerous rooms, corridors, and stairwells, each labeled with numerical data.

Room and Area Data:

- Top Left Section:** Rooms 1, 2, 3, 4, 5, 6, 7, 8, 9. Areas include 46.0, 13.5, 12, 28.1, 13, 28.3, 14, 92, 16, 16.2, 17, 18, 19, 20, 21, 22, 23, 24, 25, 26, 27, 28, 29, 30, 31, 32, 33, 34, 35, 36, 37, 38, 39, 40, 41, 42, 43, 44, 45, 46, 47, 48, 49, 50, 51, 52, 53, 54, 55, 56, 57, 58, 59, 60, 61, 62, 63, 64, 65, 66, 67, 68, 69, 70, 71, 72, 73, 74, 75, 76, 77, 78, 79, 80, 81, 82, 83, 84, 85, 86, 87, 88, 89, 90, 91, 92, 93, 94, 95, 96, 97, 98, 99, 100.
- Top Right Section:** Rooms 15, 16, 17, 18, 19, 20, 21, 22, 23, 24, 25, 26, 27, 28, 29, 30, 31, 32, 33, 34, 35, 36, 37, 38, 39, 40, 41, 42, 43, 44, 45, 46, 47, 48, 49, 50, 51, 52, 53, 54, 55, 56, 57, 58, 59, 60, 61, 62, 63, 64, 65, 66, 67, 68, 69, 70, 71, 72, 73, 74, 75, 76, 77, 78, 79, 80, 81, 82, 83, 84, 85, 86, 87, 88, 89, 90, 91, 92, 93, 94, 95, 96, 97, 98, 99, 100.
- Bottom Left Section:** Rooms 1, 2, 3, 4, 5, 6, 7, 8, 9, 10, 11, 12, 13, 14, 15, 16, 17, 18, 19, 20, 21, 22, 23, 24, 25, 26, 27, 28, 29, 30, 31, 32, 33, 34, 35, 36, 37, 38, 39, 40, 41, 42, 43, 44, 45, 46, 47, 48, 49, 50, 51, 52, 53, 54, 55, 56, 57, 58, 59, 60, 61, 62, 63, 64, 65, 66, 67, 68, 69, 70, 71, 72, 73, 74, 75, 76, 77, 78, 79, 80, 81, 82, 83, 84, 85, 86, 87, 88, 89, 90, 91, 92, 93, 94, 95, 96, 97, 98, 99, 100.
- Bottom Right Section:** Rooms 1, 2, 3, 4, 5, 6, 7, 8, 9, 10, 11, 12, 13, 14, 15, 16, 17, 18, 19, 20, 21, 22, 23, 24, 25, 26, 27, 28, 29, 30, 31, 32, 33, 34, 35, 36, 37, 38, 39, 40, 41, 42, 43, 44, 45, 46, 47, 48, 49, 50, 51, 52, 53, 54, 55, 56, 57, 58, 59, 60, 61, 62, 63, 64, 65, 66, 67, 68, 69, 70, 71, 72, 73, 74, 75, 76, 77, 78, 79, 80, 81, 82, 83, 84, 85, 86, 87, 88, 89, 90, 91, 92, 93, 94, 95, 96, 97, 98, 99, 100.

Stairwells and Corridors:

- Stairwells:** Located in the bottom right corner, labeled with numbers 1, 2, 3, 4, 5, 6, 7, 8, 9, 10, 11, 12, 13, 14, 15, 16, 17, 18, 19, 20, 21, 22, 23, 24, 25, 26, 27, 28, 29, 30, 31, 32, 33, 34, 35, 36, 37, 38, 39, 40, 41, 42, 43, 44, 45, 46, 47, 48, 49, 50, 51, 52, 53, 54, 55, 56, 57, 58, 59, 60, 61, 62, 63, 64, 65, 66, 67, 68, 69, 70, 71, 72, 73, 74, 75, 76, 77, 78, 79, 80, 81, 82, 83, 84, 85, 86, 87, 88, 89, 90, 91, 92, 93, 94, 95, 96, 97, 98, 99, 100.
- Corridors:** A central corridor system runs through the middle of the building, connecting the various rooms and stairwells.

Other Features:

- Entrances:** Located at the bottom left and bottom right corners.
- Exits:** Located at the top left and top right corners.
- Dimensions:** Numerous numerical values are scattered throughout the plan, likely representing room dimensions or areas.